

Zing Driver Installation Guide

This tutorial has been tested on Windows 8.1 and Windows 10

1) Download drivers

From the following page:

<https://www.epiloglaser.com/tech-support/zing-drivers.htm>

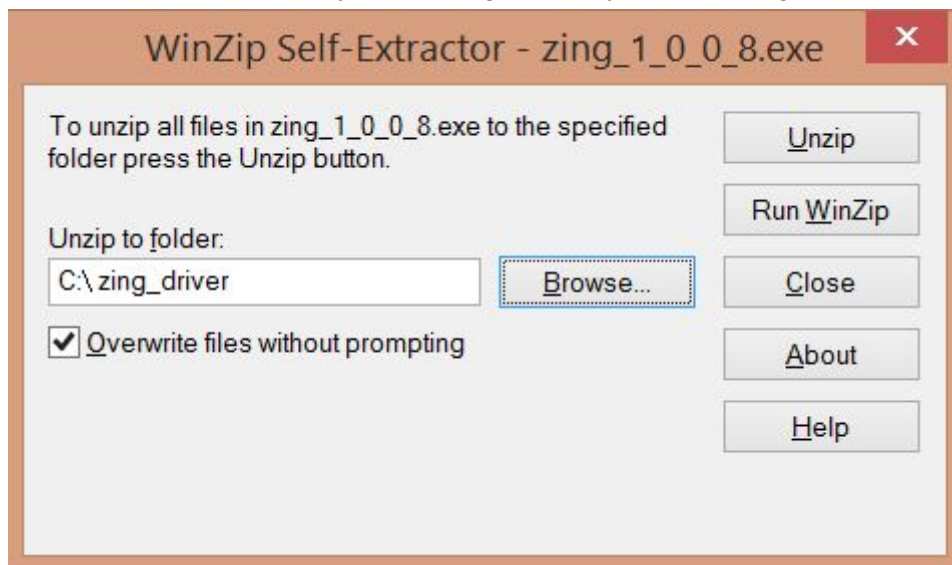
Download these 3 items from the page.

- Epilog Zing Driver 9.02 (01/07/15)
- DAT Converter (08/15/14)
- Firmware: 1.0.0.8

Each of these will be a .exe file.

2) Extract contents

Run each of the .exe file, you will be greeted by the following window:



Ensure that all 3 .exe files unzips to the same location.

3) Connect to printer

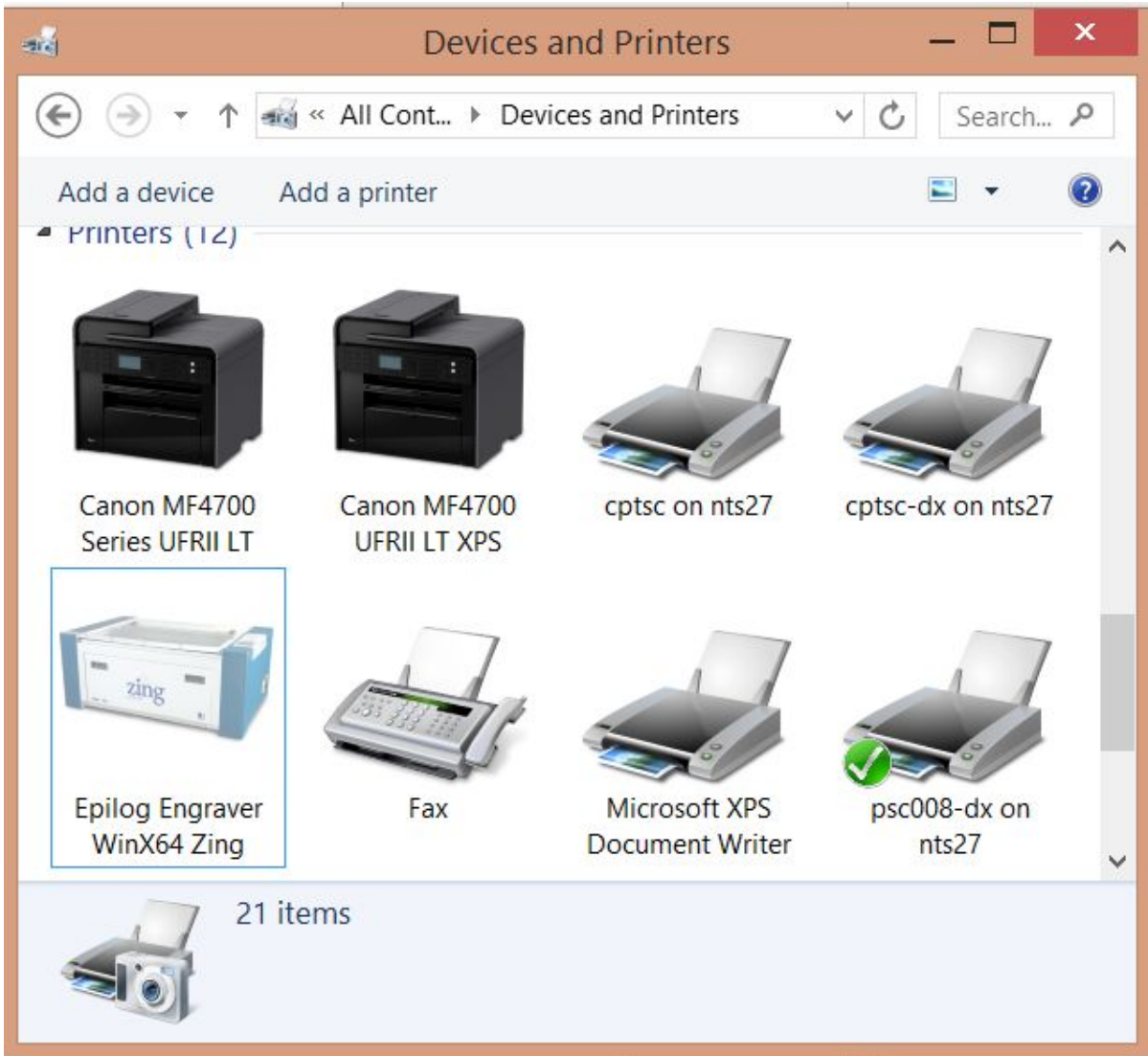
Plug in the USB, the device should search for the driver files automatically.

4) Check installation

Check that the installation is complete by going to

Go to Control panel > View Devices and printers

You should see the laser option as shown below, under printers



If you do not see this option, look under “unrecognised” and select preferences to re-install the drivers

OpenOffice Draw Setup Guide

1) Download and run installer

From the following page:

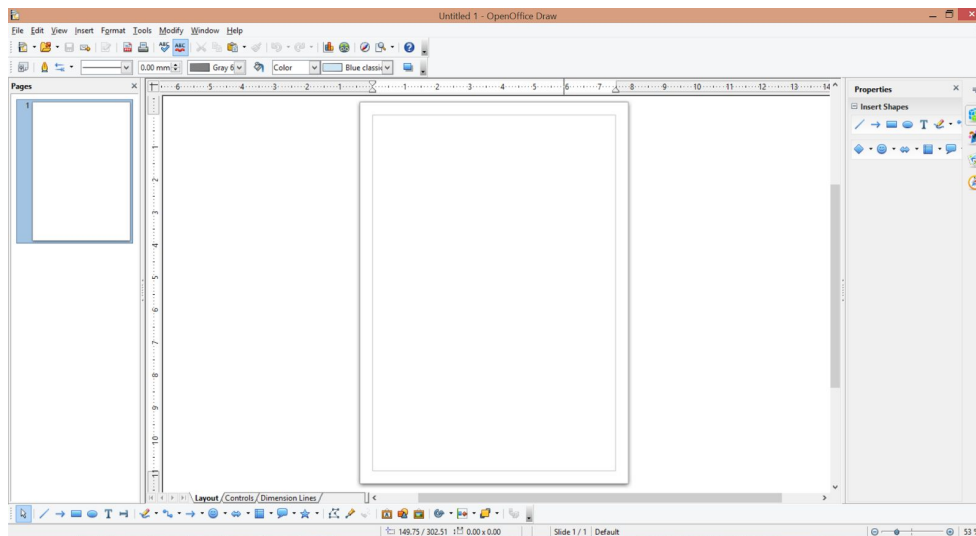
<https://www.openoffice.org/download/index.html>

Download open office. Ensure that you have selected the right Operating system and language. This tutorial uses version 4.1.4

Run the installations with default settings

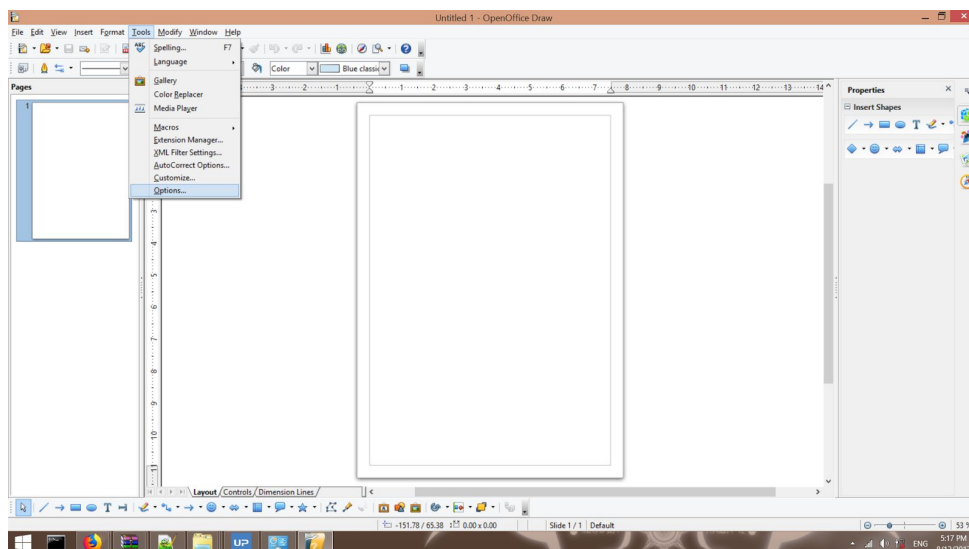
2) Run Open Office

You should be greeted with the following screen:



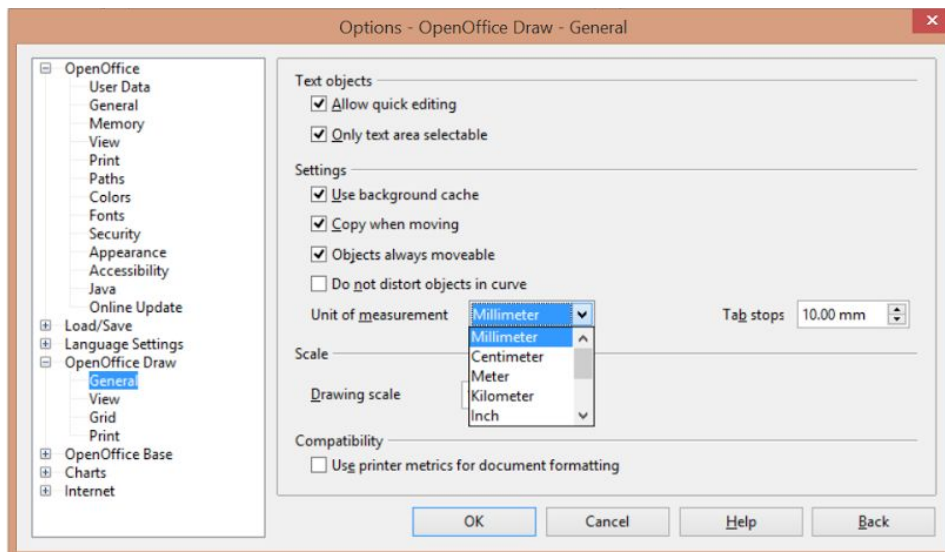
3) Set measurements to metric

Select Tools > Options..

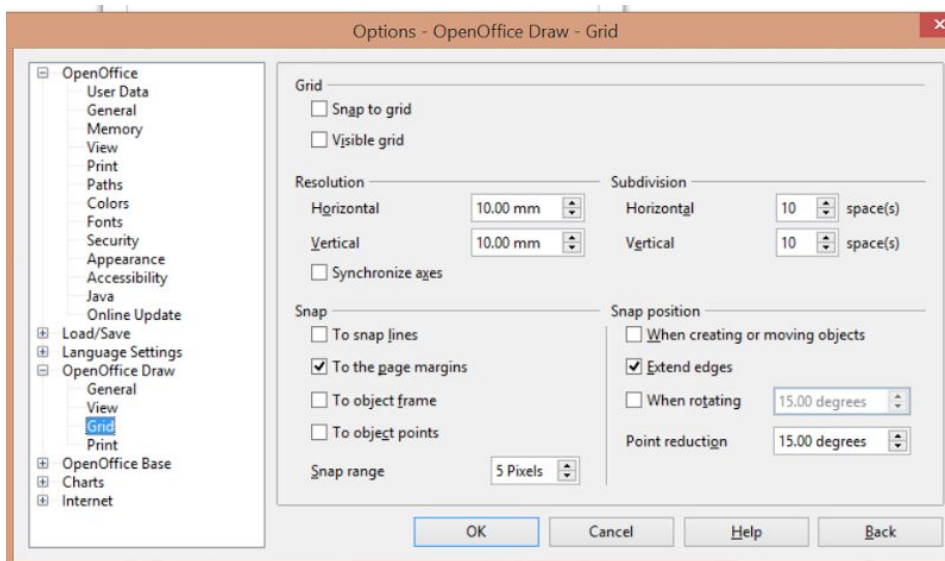


Select OpenOffice Draw > General

Set Units of Measurements to Millimeters, and Tab stops to 10.00mm



Under Grid, Set the resolution Horizontal and Vertical to 10mm, and the subdivision's horizontal and vertical to 10



Autodesk Inventor Installation

Students under NUS are able to use Autodesk Inventor for 3 years upon installation and is required to register with their student email.

Installation link: <https://www.autodesk.com/education/free-software/inventor-professional>

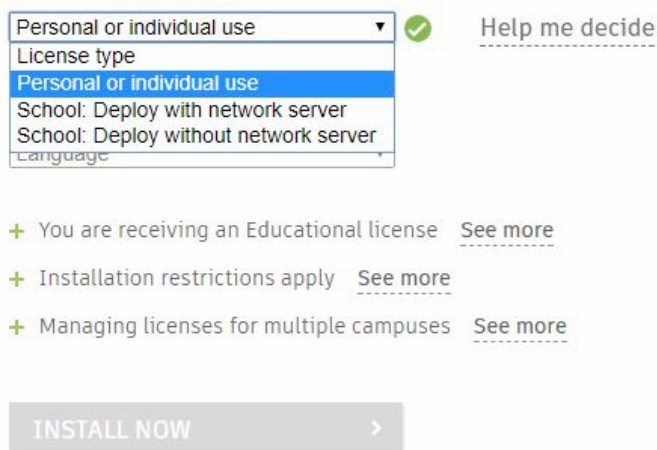
System requirement:

<https://knowledge.autodesk.com/support/inventor-products/troubleshooting/caas/sfdcarticles/sfdcarticles/System-requirements-for-Autodesk-Inventor-2018.html>

1) After registering for the account, download Inventor



2) Under the dropdown, select 'Personal or individual use'.



3) Fill in the other details accordingly and install.